

# A NEW POINT OF VIEW

OXENFORD / MAUDSLAND

PEAK  
Property Research



# EXECUTIVE SUMMARY

The Northern Gold Coast corridor provides easy access to major road and public transport networks. The Gold Coast's leisure paradise is on your doorstep. Enjoy miles of sun-kissed golden beaches, kilometres of pristine waterway for boating – a global surfing mecca fringed by gleaming apartment towers and international resorts. All the entertainment options this globally renowned tourist destination offers are available for residents of Oxenford - Maudsland within twenty five minutes' drive and just 45 minutes to the north is Queensland's capital. Brisbane captures all the amenity, infrastructure and cultural opportunities you would expect from this fast growing new world city.

The Oxenford - Maudsland Statistical Area Level 2 (SA2) consists of two suburbs:

- Oxenford
- Maudsland

The Oxenford - Maudsland SA2 has a total land area of 26.9km<sup>2</sup>.

## POPULATION AND PROJECTIONS

As at 30 June 2017, the estimated resident population for the Oxenford - Maudsland SA2 was 16,682, with the population projected to reach 21,330 persons at 30 June 2041.

This is an expected population increase of 27.86%.

**EXPECTED POPULATION  
INCREASE FOR OXFENFORD  
- MAUDSLAND SA2 FROM  
2017 TO 2041 IS:**

**27.86%**

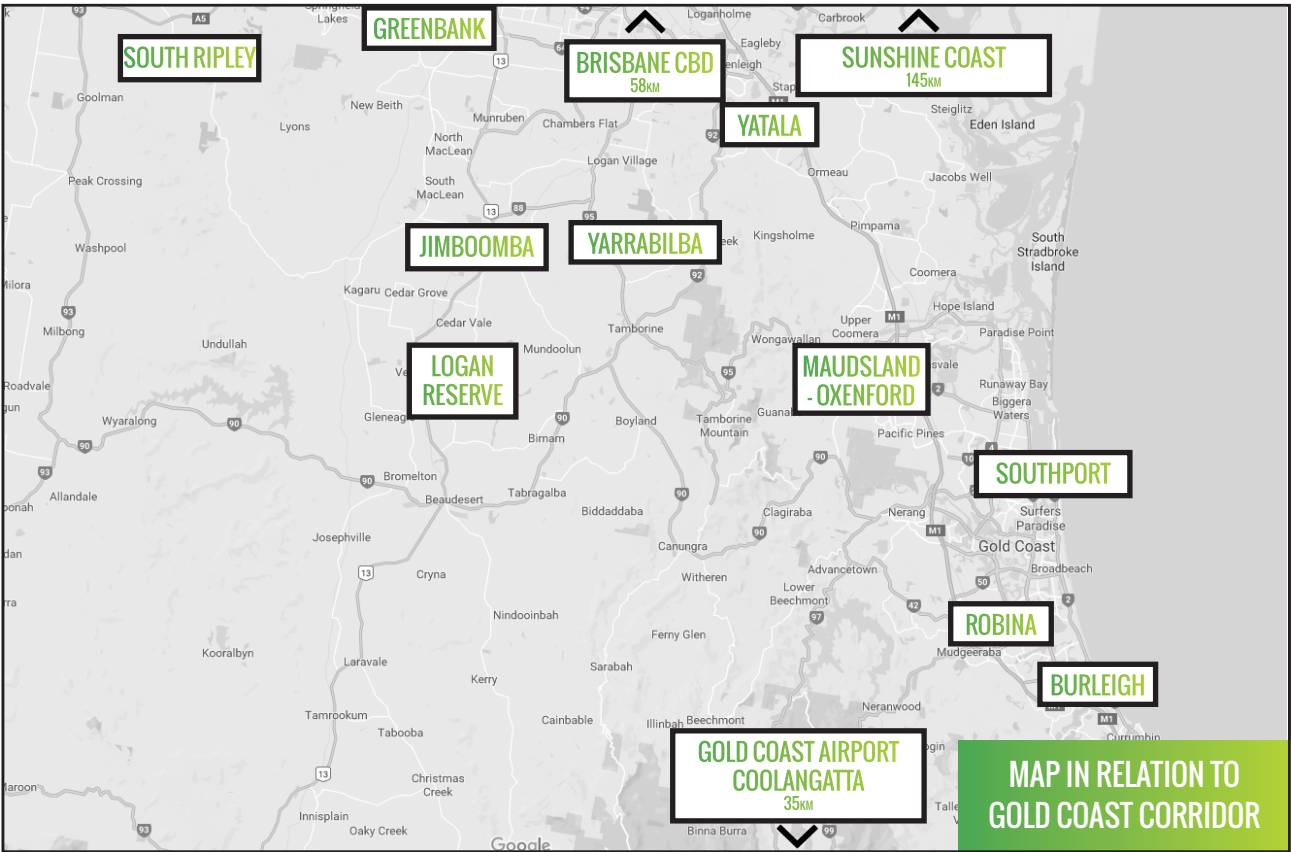
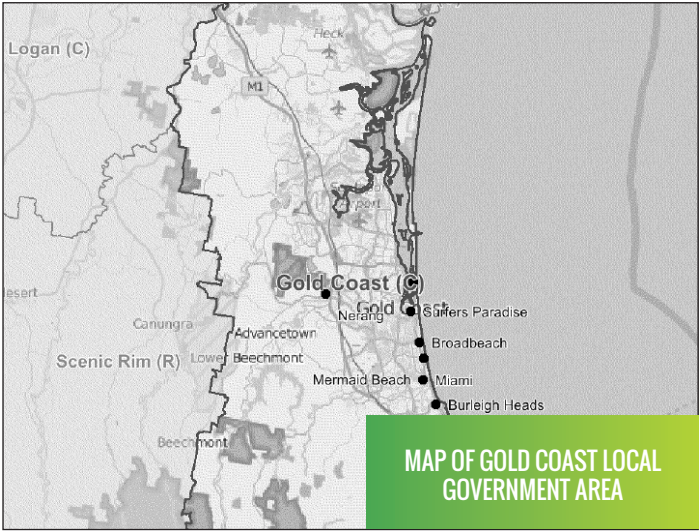
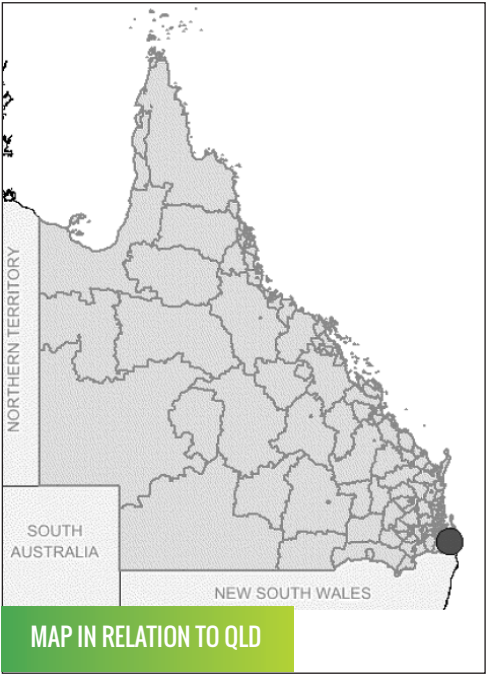
## EMPLOYMENT

The top five industry subdivisions of employment for the Oxenford - Maudsland SA2 as at the 2016 Census of Population and Housing Data were:

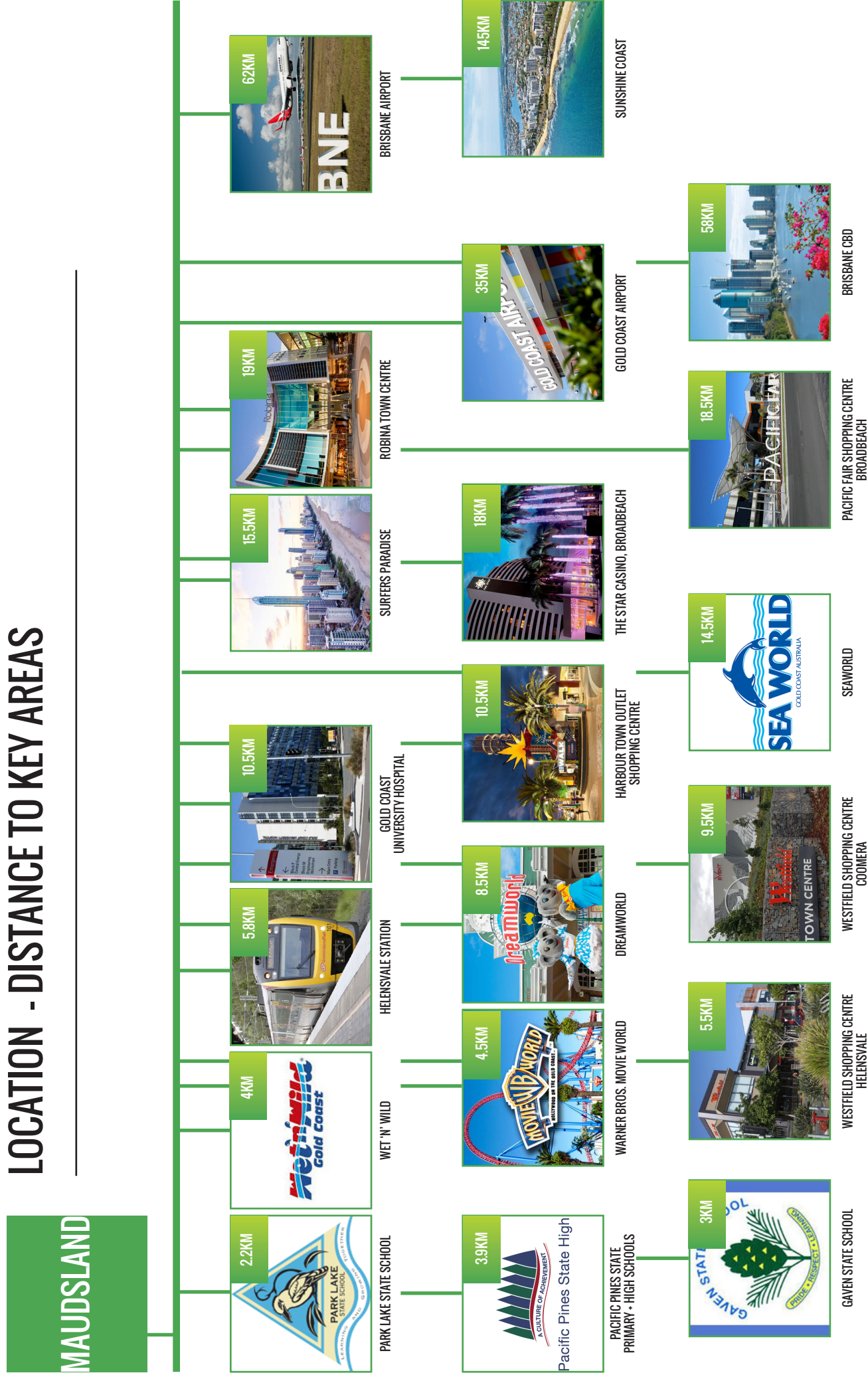
1. Construction Services (8.2%)
2. Other Store-Based Retailing (5.8%)
3. Preschool and School Education (5.3%)
4. Food and Beverage Services (5.1%)
5. Professional, Scientific and Technical Services (except Computer System Design and Related Services) (4.3%)



# LOCATION



# LOCATION - DISTANCE TO KEY AREAS





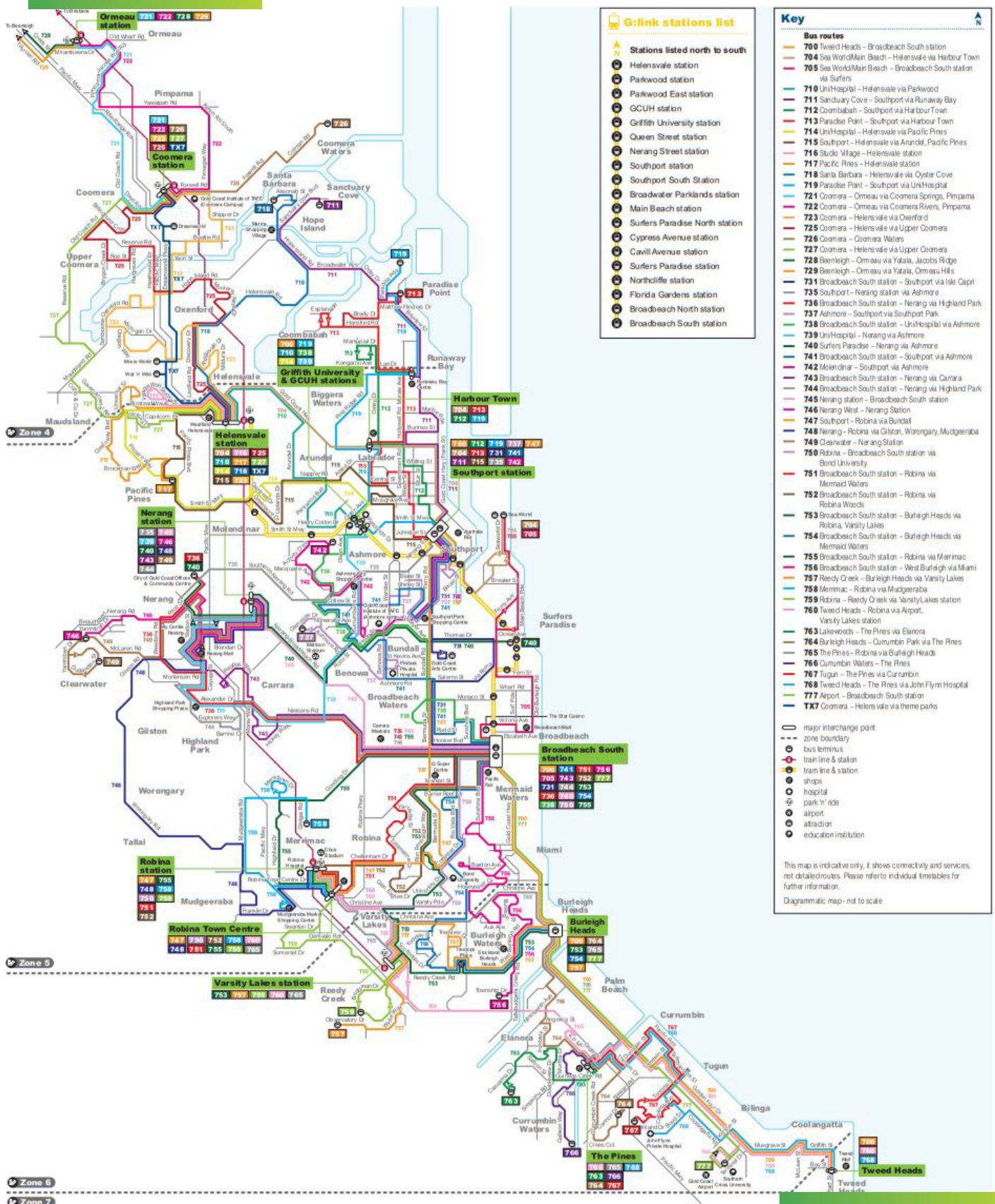
# PUBLIC TRANSPORT





# PUBLIC TRANSPORT

## BUS ROUTES



TRANS LINK  
GOLD COAST  
NETWORK  
MAP



# PUBLIC TRANSPORT

## SEQ TRANSLINK NETWORK MAP

Key

Ferry Grove and Beenleigh lines

Shorncliffe and Cleveland lines

Airport and Gold Coast lines

Caboolture/Sunshine Coast and Ipswich/Rosewood lines

Redcliffe Peninsula and Springfield lines

Doomben line

Special event service only

Busway lines

G:link light rail line

Transfer to other train services

TransLink fare zones

Transfer to busway services

Transfer to light rail service

Special fares apply

Independent access

Assisted access

\*

King George Square busway station

^

Queen Street bus station

There are many bus services scheduled to connect with train services at most train stations. Please use the TransLink journey planner to plan your journey.

Express services do not stop at all stations depicted on this map. Please refer to separate line timetables for details.

Most train stations have free park 'n' ride facilities.

For details visit [translink.com.au](http://translink.com.au) or call 13 12 30 anytime.

<sup>a</sup> Services to and from the airport stations are operated by Airtrain Citylink Limited ABN 98 066 543 315 pursuant to a contract for services with Queensland Rail.

<sup>f</sup> Services to and from Gympie North do not stop at Eagle Junction.

~ Buranda busway station is fully accessible. Buranda train station is limited access.

Schematic map – not to scale.

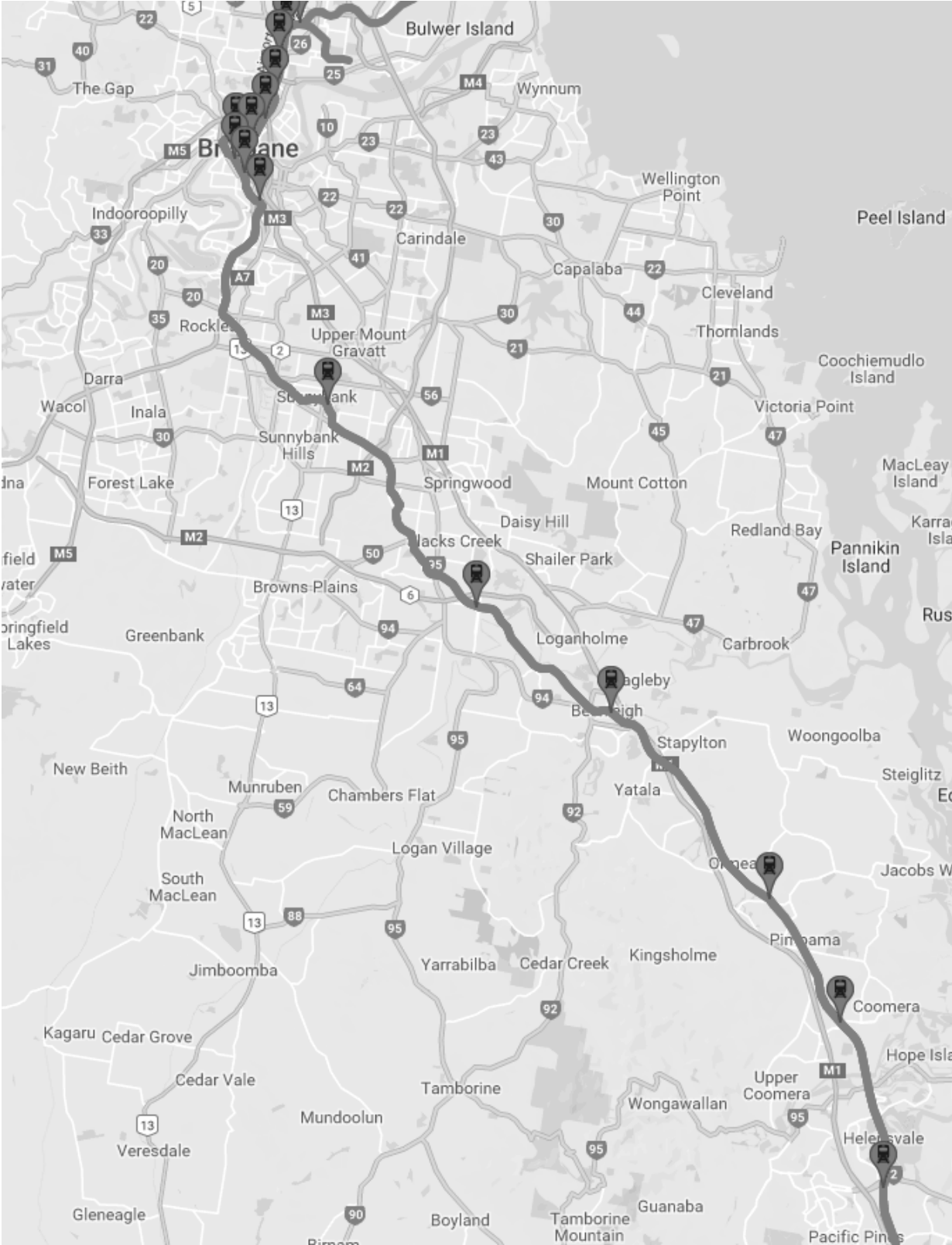
The map illustrates the following lines and stations:

- Sunshine Coast line:** Gympie North, Traveston, Cooran, Pomona, Cooroy, Eumund, Yandina, Nambour, Woombye, Palmwoods, Eudo, Mooloolah, Landsborough, Beerwah, Glasshouse Mountains, Beerburum, Elimbah, Caboolture, Morayfield, Burpengary, Narangba, Dakabin, Petrie.
- Caboolture line:** Caboolture, Morayfield, Burpengary, Narangba, Dakabin, Petrie.
- Redcliffe Peninsula line:** Kippa-Ring, Rothwell, Mango Hill East, Mango Hill, Murrumba Downs, Kallangur, Lawnton, Bray Park, Strathpine, Bald Hills, Carabine, Zillmere, Geebung, Sunshine, Virginia, Northgate, Nudgee, Banyo, Bindra, Boondall, International Airport, Donetskiy Airport.
- Shorncliffe line:** Shorncliffe, Sandgate, Deagon, North Boondall, Boondall, Nudgee, Banyo, Bindra, Boondall, International Airport, Donetskiy Airport.
- Airport line:** Clayfield, Hendra, Ascot, Doomben, Doomben line.
- Ferry Grove line:** Ferry Grove, Keperra, Grovely, Oxford Park, Mitchell, Caythorne, Enoggera, Askerley, Newmarket, Wilton, Turo Street, Lulleyche, Kedron Brook, Roma Street, KGS, Exhibition, QUT Kelvin Grove, Herston, Milton, Toowong, Taringa, Auchenflower, Indooroopilly, Dutton Park Place, Logan Road, UQ Lakes, BOPA Hospital, Chelmer, Graceville, Sherwood, Darra, Oxley, Galilee, Goodna, Riverview, Dinmore, Ebbw Vale, Bundamba, Booval, East Ipswich, Ipswich, Thomas Street, Wukuraka, Karabin, Walloon, Thagoona, Rosewood.
- Springfield line:** Springfield Central, Springfield, Richlands, Oxley, Darra, Galilee, Goodna, Riverview, Dinmore, Ebbw Vale, Bundamba, Booval, East Ipswich, Ipswich, Thomas Street, Wukuraka, Karabin, Walloon, Thagoona, Rosewood.
- Ipswich line:** Ipswich, Thomas Street, Wukuraka, Karabin, Walloon, Thagoona, Rosewood.
- Rosewood line:** Rosewood.
- Beenleigh line:** Beenleigh, Ormeau, Coomera, Helensvale, Nerang, Robina, Varsity Lakes, Loganlea, Bethania, Edens Landing, Holmview, Surfers Paradise North, Cypress Avenue, Cavill Avenue, Surfers Paradise, Northcliffe, Florida Gardens, Broadbeach North, Broadbeach South, Main Beach.
- Gold Coast line:** Helensvale, Nerang, Robina, Varsity Lakes, Loganlea, Bethania, Edens Landing, Holmview, Surfers Paradise North, Cypress Avenue, Cavill Avenue, Surfers Paradise, Northcliffe, Florida Gardens, Broadbeach North, Broadbeach South, Main Beach.
- Busway lines:** Northern Busway, Eastern Busway, South East Busway.
- G:link light rail line:** G:link.

7

# PUBLIC TRANSPORT

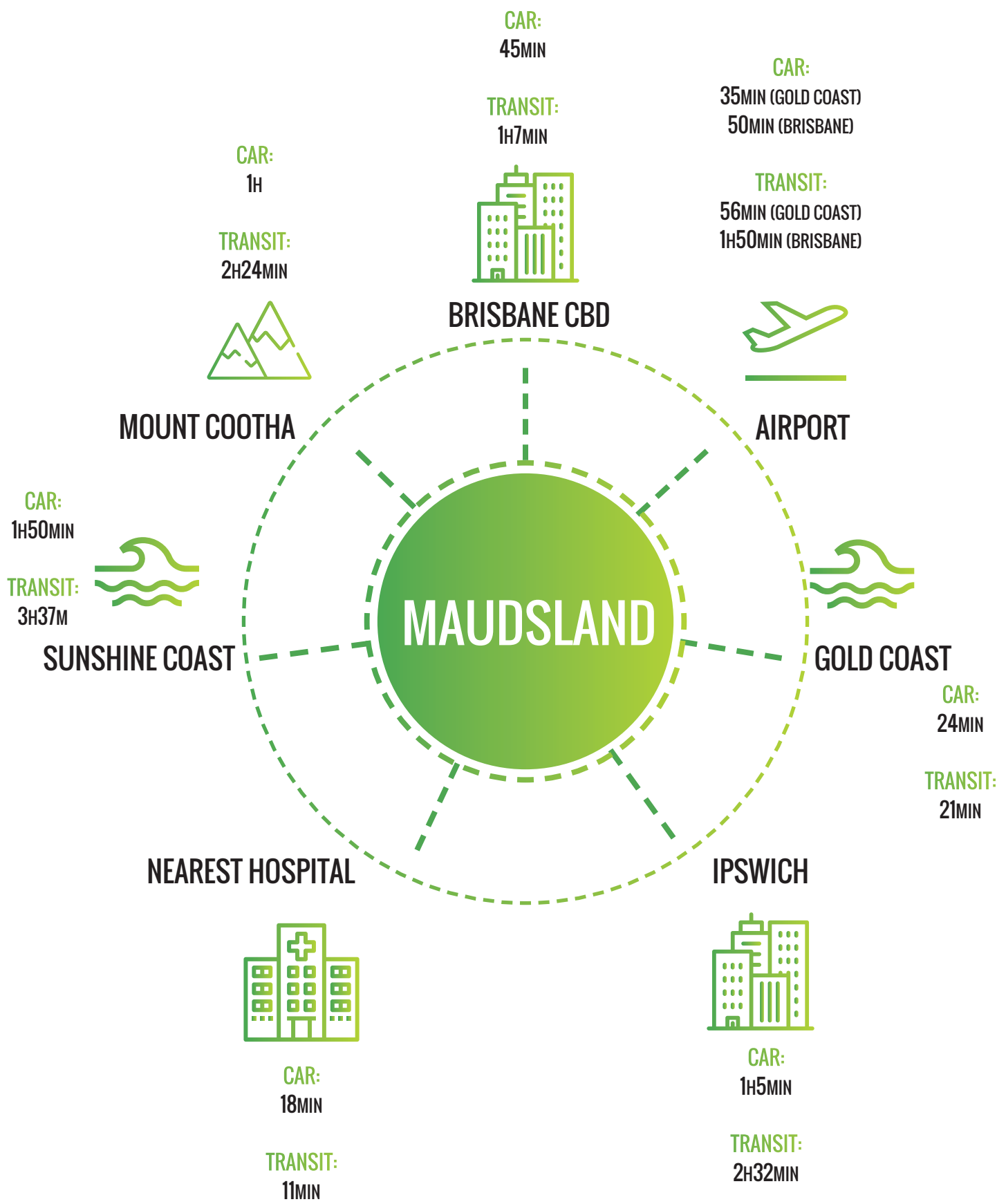
## TRAIN LINE TO CBD



HELENSVALE  
TO  
BRISBANE CBD  
APPROX 1 HOUR 7 MIN



# TRAVEL TIME



\* Car times from Maudsland  
\* Transit times from Helensvale Train Station

# POPULATION ANALYSIS

A large crowd of people is gathered outdoors, likely at a festival or public event. The scene is captured from a low angle, looking over the shoulders of people in the foreground. A woman with short brown hair, wearing a light-colored t-shirt and a dark strap over her shoulder, is seen from behind, looking towards the crowd. The background is filled with many other people, some wearing hats and casual clothing. The lighting is bright, suggesting a sunny day, and there are some lens flare effects visible. A black rectangular box with white text is overlaid on the top left of the image.



# DEMOGRAPHICS

## Estimated Resident Population (ERP)

### Gold Coast (C) LGA

- ERP of 591,356 persons as at 30 June 2017
- Average annual growth rate of 2.3% over five years
- Average annual growth rate of 2.4% over ten years

### Oxenford - Maudsland SA2

- ERP of 16,682 persons as at 30 June 2017
- Average annual growth rate of 1.9% over five years
- Average annual growth rate of 2.7% over ten years

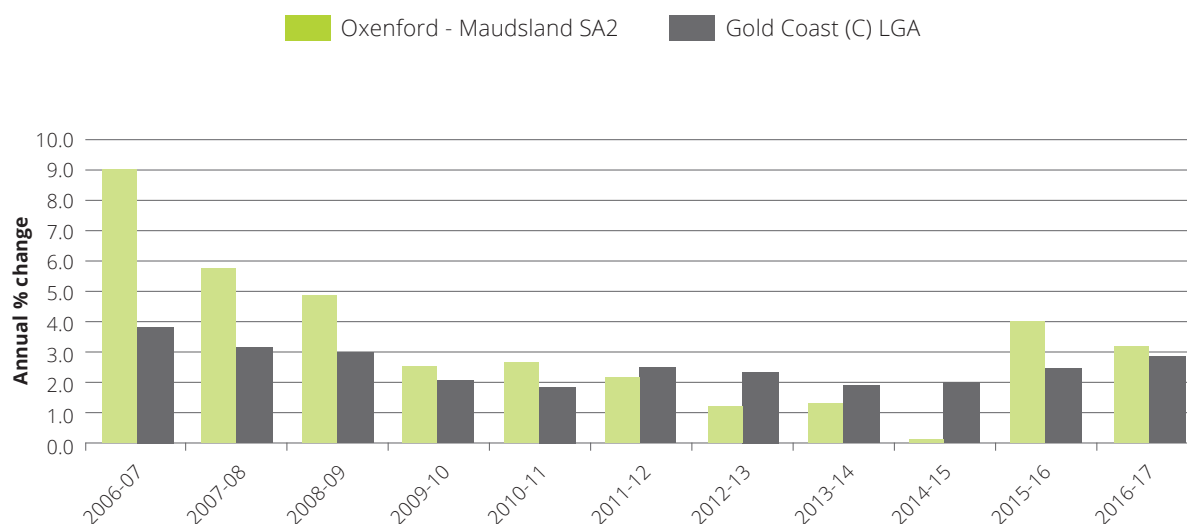
AS AT 30 JUNE 2017, THE  
ESTIMATED RESIDENT  
POPULATION FOR  
OXENFORD - MAUDSLAND  
SA2 WAS:

**16,682  
PERSONS**

## Estimated resident population Oxenford - Maudsland SA2 and Gold Coast (C) LGA

SA2 / LGA	As at 30 June			Average annual growth rate	
	2007	2012	2017r	2007-2017r	2012-2017r
	- Number -			- % -	
Oxenford - Maudsland SA2	12,732	15,173	16,682	2.7	1.9
Gold Coast (C) LGA	466,940	528,342	591,356	2.4	2.3

## Estimated resident population growth, Oxenford - Maudsland SA2 and Gold Coast (C) LGA



Source: ABS 3218.0, Regional Population Growth, Australia, various editions

# DEMOGRAPHICS

## Population Projections

### Gold Coast (C) LGA

- Population projected to be 943,686 persons as at 30 June 2041
- Increase of 2.0% per year over 25 years

### Oxenford - Maudsland SA2

- Population projected to be 21,330 persons as at 30 June 2041
- Increase of 1.1% per year over 25 years

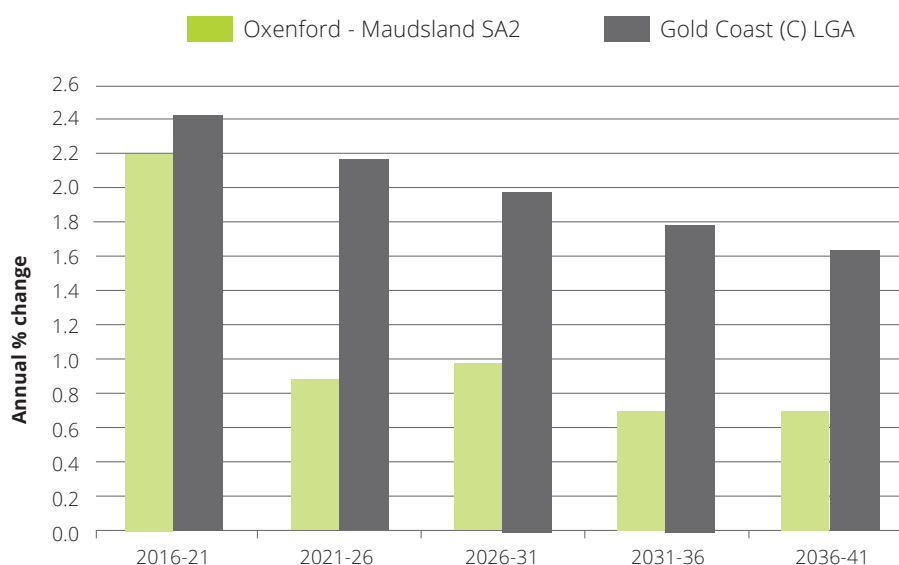
FROM 2016 TO 2041,  
THE POPULATION FOR  
OXENFORD - MAUDSLAND  
SA2 IS PROJECTED TO  
INCREASE FROM 16,313  
**TO 21,330  
PERSONS**

## Projected population, Oxenford - Maudsland SA2 and Gold Coast (C) LGA

SA2 / LGA	As at 30 June						Average annual growth rate
	2016 <sup>(a)</sup>	2021	2026	2031	2036	2041	2016-2041
	- Number -						- % -
Oxenford - Maudsland SA2	16,313	18,186	18,991	19,926	20,615	21,330	1.1
Gold Coast (C) LGA	576,918	650,349	723,342	796,976	870,425	943,686	2.0

(a) 2016 data are estimated resident population (ERP)

## Projected population change, Oxenford - Maudsland SA2 and Gold Coast (C) LGA



Source: Queensland Government Population Projections, 2018 edition (medium series)



# DEMOGRAPHICS

## Family Composition

### Gold Coast (C) LGA

- 145,416 families
- 41.9% of total families were couple families with children

### Oxenford - Maudsland SA2

- 4,360 families
- 49.9% of total families were couple families with children

THE PERCENTAGE OF TOTAL FAMILIES IN OXFENFORD - MAUDSLAND WHICH WERE COUPLE FAMILIES WITH CHILDREN WAS

49.9%

Family composition<sup>(a)</sup>, Oxenford - Maudsland SA2 and Gold Coast (C) LGA, 2016

SA2 / LGA	Couple family with no children		Couple family with children		One-parent family		Total <sup>(b)</sup>
	Number	%	Number	%	Number	%	Number
Oxenford - Maudsland SA2	1,417	32.5	2,176	49.9	725	16.6	4,360
Gold Coast (C) LGA	57,379	39.5	60,903	41.9	25,027	17.2	145,416

(a) Includes same-sex couple families. (b) Includes other families  
Source: ABS, Census of Population and Housing, 2016, General Community Profile - G25





# DWELLING & BUILDING ANALYSIS





# DWELLING BY DWELLING STRUCTURE

A dwelling is a structure which is intended to have people live in it.

The below information is based on occupied private dwellings.

## Gold Coast (C) LGA

- 115,758 occupied private dwellings (or 58.3%) were separate houses

## Oxenford - Maudsland SA2

- 3,970 occupied private dwellings (or 77.7%) were separate houses

THE PERCENTAGE OF  
TOTAL OCCUPIED PRIVATE  
DWELLINGS IN OXFORD  
- MAUDSLAND SA2 WHICH  
WERE SEPARATE HOUSES  
WAS:

**77.7%**

## Occupied private dwellings by dwelling structure, Oxenford - Maudsland SA2 and Gold Coast (C) LGA, 2016

SA2 / LGA	Separate house	Semi-detached	Apartment	Caravan	Other	Total
	- Number -					
Oxenford - Maudsland SA2	3,970	1,117	16	0	0	5,107
Gold Coast (C) LGA	115,758	41,021	39,485	1,358	124	198,668

# DWELLING BY TENURE TYPE

Tenure type describes whether a household rents or owns the dwelling in which they live.

## Gold Coast (C) LGA

- 52,121 occupied private dwellings (or 26.2%) were fully owned

## Oxenford - Maudsland SA2

- 949 occupied private dwellings (or 18.6%) were fully owned

THE PERCENTAGE OF  
TOTAL OCCUPIED PRIVATE  
DWELLINGS IN OXFORD  
- MAUDSLAND SA2 WHICH  
WERE FULLY OWNED WAS:

**18.6%**

## Occupied private dwellings by tenure type, Oxenford - Maudsland SA2 and Gold Coast (C) LGA, 2016

SA2 / LGA	Fully owned		Being purchased		Rented		Other		Total
	Number	%	Number	%	Number	%	Number	%	Number
Oxenford - Maudsland SA2	949	18.6	2,695	52.8	1,355	26.5	12	0.2	5,107
Gold Coast (C) LGA	52,121	26.2	66,799	33.6	72,621	36.6	1,465	0.7	198,668



# INDUSTRY & DEVELOPMENT - BUILDING APPROVALS

## Gold Coast (C) LGA

- 2,611 approved new houses in the 12 months ending 31 December 2018
- \$2,416.1 million of building value in residential building approvals

## Oxenford - Maudsland SA2

- 161 approved new houses in the 12 months ending 31 December 2018
- \$57.7 million of building value in residential building approvals

THE NUMBER OF NEW  
HOUSES APPROVED IN  
OXENFORD - MAUDSLAND  
SA2 IN THE 12 MONTHS  
ENDING 31 DECEMBER 2018

**161  
APPROVALS**

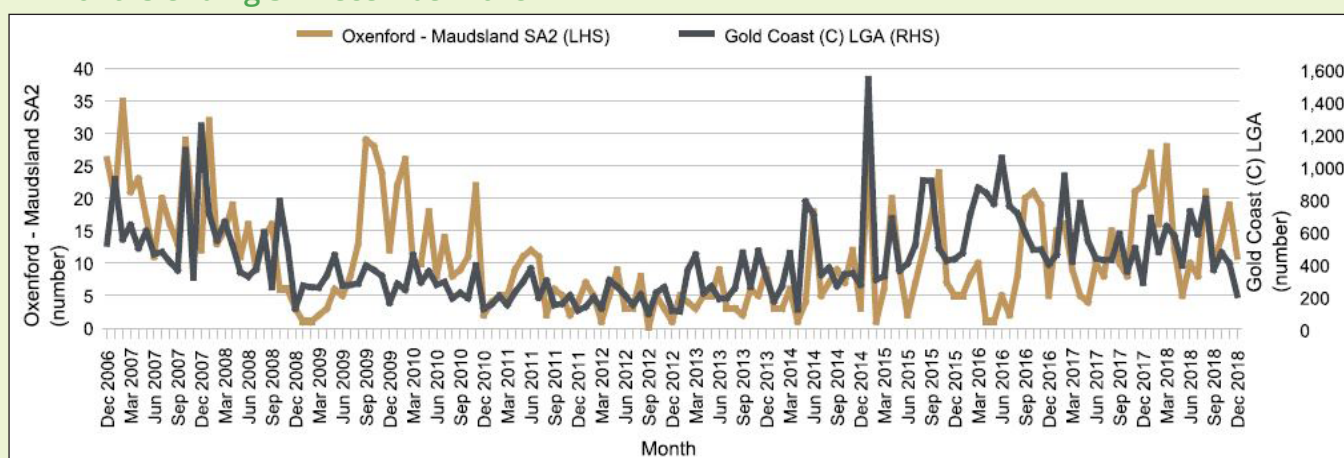
## Residential and non-residential building approvals, Oxenford - Maudsland SA2 and Gold Coast (C) LGA, 12 months ending 31 December 2018

SA2 / LGA	Residential Building Approvals				Building Value				Total
	New Houses	New Other <sup>(a)</sup>	Alterations, additions and conversions	Total	Residential		Non-residential		
	- Number -				\$'000	%	\$'000	%	\$'000
Oxenford - Maudsland SA2	161	20	0	181	57,699	84.2	10,831	15.8	68,530
Gold Coast (C) LGA	2,611	3,630	9	6,250	2,416,104	68.0	1,135,416	32.0	3,551,520

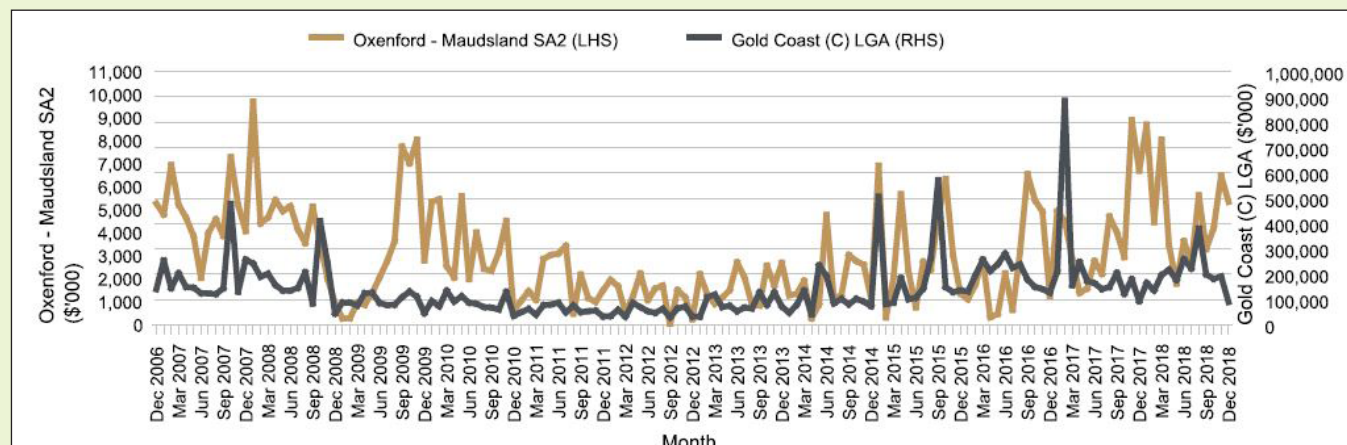
*(a) Other residential buildings include: semidetached, row or terrace houses or townhouses; and flats, units or apartments.*

Source: ABS 8731.0, Building Approvals, Australia, various editions

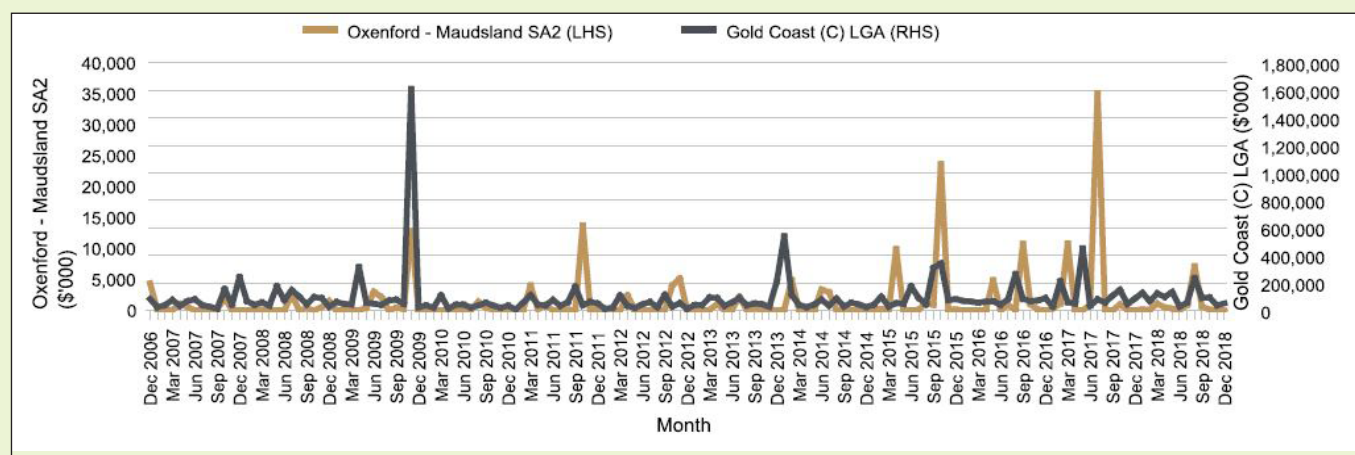
## Number of residential building approvals, Oxenford - Maudsland SA2 and Gold Coast (C) LGA, 12 months ending 31 December 2018



## Value of residential building approvals, Oxenford - Maudsland SA2 and Gold Coast (C) LGA



## Value of non-residential building approvals, Oxenford - Maudsland SA2 and Gold Coast (C) LGA



Source: ABS 8731.0, *Building Approvals, Australia, various editions*





# SERVICES



# EDUCATION

## Early Childhood Education & Care Services

### Gold Coast (C) LGA

- 304 early childhood education and care services as at 31 August 2018
- 205 long day care services

### Oxenford - Maudsland SA2

- 11 early childhood education and care services as at 31 August 2018
- 7 long day care services

THE NUMBER OF EARLY  
CHILDHOOD EDUCATION  
AND CARE SERVICES IN  
OXENFORD - MAUDSLAND  
SA2 AS AT 31 AUGUST 2018  
WAS:  
**11**  
**SERVICES**

Early childhood education and care services, Oxenford - Maudsland SA2 and Gold Coast (C) LGA, 31 August 2018

SA2 / LGA	Family Day Care	Kindergar- tens	Long Day Care	School Aged Care	Limited Hours Care	Total
	- Number -					
Oxenford - Maudsland SA2	0	2	7	2	0	11
Gold Coast (C) LGA	2	23	205	70	0	304



# EDUCATION

---

## Schools

### Gold Coast (C) LGA

- 104 schools as at June 2018

### Oxenford - Maudsland SA2

- 2 schools as at June 2018

## Universities

### Gold Coast (C) LGA

- Bond University, Robina
- Griffith University Gold Coast Campus (Southport)
- Southern Cross University Gold Coast Campus (Bilinga)

### Oxenford - Maudsland SA2

- 0

AS AT JUNE 2018, THE  
NUMBER OF SCHOOLS  
IN COOMERA - PIMPAMA  
REGION WAS:

8  
SCHOOLS

# HEALTH

---

## EMERGENCY SERVICES

### Police Stations

#### Gold Coast (C) LGA

- 10 police stations as at June 2018

#### Oxenford - Maudsland SA2

- 0 police stations as at June 2018

### Ambulance Stations

#### Gold Coast (C) LGA

- 12 ambulance stations as at June 2018

#### Oxenford - Maudsland SA2

- 0 ambulance stations as at June 2018

### Fire Stations

#### Gold Coast (C) LGA

- 8 fire stations as at June 2018

#### Oxenford - Maudsland SA2

- 0 fire stations as at June 2018

## HOSPITALS

### Gold Coast (C) LGA

- 23 hospitals as at June 2018

### Oxenford - Maudsland SA2

- 0 hospitals as at June 2018

AS AT JUNE 2018, THE  
NUMBER OF COMBINED  
EMERGENCY SERVICES IN  
GOLD COAST (C) LGA WAS:

53  
EMERGENCY  
SERVICES



# EMPLOYMENT & ECONOMY ANALYSIS





# EMPLOYMENT

## By Industry

### Gold Coast (C) LGA

- 12.4% of employed persons worked in Health care and social assistance industry
- 11.5% of employed persons worked in Construction industry

### Oxenford - Maudsland SA2

- 13.5% of employed persons worked in Construction industry
- 12.2% of employed persons worked in Health care and social assistance industry
- Highest specialisation ratio of 1.45 in Mining industry

TOP 5 INDUSTRIES OF  
EMPLOYMENT WERE:  
**CONSTRUCTION**  
**OTHER RETAIL**  
**EDUCATION**  
**FOOD & BEV**  
**PROFESSIONAL**

## Employment by industry, Oxenford - Maudsland SA2 and Gold Coast (C) LGA, 2016

Industry	Oxenford - Maudsland SA2		Gold Coast (C) LGA		Specialisation Ratio
	- Number -	%	- Number -	%	- Number -
Agriculture, forestry and fishing	44	0.6	1,293	0.5	1.13
Mining	80	1.0	1,834	0.7	1.45
Manufacturing	544	6.9	14,000	5.4	1.29
Electricity, gas, water and waste services	52	0.7	1,516	0.6	1.14
Construction	1,061	13.5	29,955	11.5	1.17
Wholesale Trade	200	2.5	6,321	2.4	1.05
Retail trade	897	11.4	29,292	11.2	1.02
Accommodation and Food Services	517	6.6	25,241	9.7	0.68
Transport, postal and warehousing	336	4.3	9,840	3.8	1.13
Information media and technologies	133	1.7	4,051	1.6	1.09
Financial and insurance services	175	2.2	6,711	2.6	0.86
Rental, hiring and real estate services	157	2.0	7,717	3.0	0.67
Professional, scientific and technical services	415	5.3	15,978	6.1	0.86
Administration and support services	305	3.9	11,307	4.3	0.89
Public administration and safety	389	5.0	11,075	4.3	1.16
Education and training	594	7.6	21,125	8.1	0.93
Health care and social assistance	959	12.2	32,380	12.4	0.98
Arts and recreation services	261	3.3	7,721	3.0	1.12
Other services	352	4.5	10,372	4.0	1.13
<b>Total</b>	<b>7,858</b>	<b>100.0</b>	<b>260,548</b>	<b>100.0</b>	<b>1.00</b>

Source: ABS, Census of Population and Housing, 2016, General Community Profile - G51 and unpublished data

# ECONOMY

## Gold Coast (C) LGA

- Median mortgage repayment of \$1,950 per month
- Average household size of 2.6 persons per dwelling

## Oxenford - Maudsland SA2

- Median mortgage repayment of \$1,950 per month
- Average household size of 2.9 persons per dwelling

THE MEDIAN TOTAL  
PERSONAL INCOME FOR  
OXENFORD - MAUDSLAND  
SA2 WAS:

**\$714 PER  
WEEK**

Selected medians and averages, Oxenford - Maudsland SA2 and Gold Coast (C) LGA, 2016

SA2 / LGA	Median/Average					
	Median mortgage repayment	Median total family income	Median total household income	Median total personal income	Average household size	Average number of persons per bedroom
	\$/month	\$/week	\$/week	\$/week	persons	number
Oxenford - Maudsland SA2	1,950	1,794	1,677	714	2.9	0.8
Gold Coast (C) LGA	1,950	1,657	1,404	666	2.6	0.8





## DISCLAIMER

The information and forecasts given in this document are predictive in character . Whilst every effort has been taken to ensure that the assumptions on which the forecasts are based are reasonable, the forecasts may be affected by incorrect assumptions or by known or unknown risks and uncertainties.

The ultimate outcomes may differ substantially from these forecasts. This information has been prepared without taking account of your objectives, financial situation or needs. Because of this you should, before acting on this information, consider its appropriateness, having regard to your objectives, financial situation or needs.

The information may contain material provided directly by third parties, and while such material is published with permission, Peak Property Advisory Pty Ltd accepts no responsibility for the accuracy or completeness of any such material. Except where contrary to law , Peak Property Advisory intends by this notice to exclude liability for the information.

The information is subject to change without notice and Peak Property Advisory Pty Ltd is under no obligation to up-date the information or correct any inaccuracy which may become apparent at a later date.

Information has been sourced for this report from Australian Bureau Of Statistics (ABS) and you can visit <http://www.abs.gov.au/> to find out more information.